

**FEIN. Unverwüsthliche
Elektrowerkzeuge.**



FEIN ABRASIVES

Performance day in and day out

**GRINDING WHEELS
PIPELINER WHEELS
CUT-OFF WHEELS
CHOP SAW WHEELS
FLAP DISCS
CARBIDE BURRS
FLAP WHEELS
UNITIZED DISCS
POLI-CLEAN WHEELS
SURFACE CONDITIONING PRODUCTS**

ADVANTAGES OF FEIN ABRASIVES

- State-of-the-art quality, high performance products made for serious industrial applications.
- Competitively priced.
- Made to the most stringent of safety standards to assure end users a level of quality and safety in their daily applications.
- Ideal especially when combined with FEIN high performance grinders and polishers.
- The solution to a wide realm of applications.
- Based on expertise gained from numerous years of extensive industry experience.
- Backed by a technically trained sales force, hands on and in the field.

GRINDING WHEELS

Contaminate-free, no iron, sulphur or chlorine added.

FEIN FLASHGRIND Superior Performance Grinding Wheels "SP INOX" for stainless steel, steel and non-ferrous metals

Superior performance, type 27 grinding wheels for stainless steel, steel and non-ferrous metals. Use in weld removal, deburring, surface and edge grinding. Designed for quality and consistency, guaranteed to meet the highest safety standards in the world.



EDP #	Size	RPM	Box
F-471128	4 x 1/4 x 5/8"	15,200	10
F-470244	4 1/2 x 1/4 x 7/8"	13,300	10
F-470251	5 x 1/4 x 7/8"	12,200	10
F-332245	6 x 1/4 x 7/8"	10,200	10
F-470398	7 x 1/4 x 7/8"	8,600	10
F-470411	9 x 1/4 x 7/8"	6,600	10

FEIN Small Diameter Grinding Wheels for rapid grinding and excellent finishing on steel and ferrous metals

Type 1 (Internal/External) for Electric or Air Driven Grinders

EDP #	Dia. x width x bore	Grit	RPM	Box
MFC 4008	2 x 1/4 x 3/8"	36	30,000	25
MFC 4012	2 x 3/8 x 3/8"	36	27,000	15
MFC 4016	2 x 1/2 x 3/8"	36	27,000	15
MFC 4024	3 x 1/4 x 3/8"	36	23,000	25
MFC 4028	3 x 3/8 x 3/8"	36	18,000	20
MFC 4032	3 x 1/2 x 3/8"	36	18,000	15

Mounting Mandrels

EDP #	Arbor x shank	For thickness	Box
MFC 8008	1/8 x 1/4"	.035" to 1/4"	1
MFC 8014	1/4 x 1/4" *	.035" to 1/4"	1
MFC 8038	3/8 x 1/4" *	.035" to 1/4"	1
MFC 8050	* Combo	.035" to 1/4"	2
MFC 8214	1/4 x 1/4"	3/8" to 1/2"	1
MFC 8338	3/8 x 1/4"	3/8" to 1/2"	1

FLAP DISCS

Contaminate-free, no iron, sulphur or chlorine added.

FEIN FLASHDISC Superior Performance Flap Discs "SP" for stainless steel, steel & non-ferrous metals

When a superior finish and high metal removal rates are required, FEIN flap discs are the answer. With one-step grinding and finishing, FEIN zirconia alumina flap wheels provide a distinct advantage over reinforced grinding wheels and can reduce labor costs significantly.



Size	Box	RPM	EDP # / GRIT			
			40	60	80	120
Conical "FDC" Type 29						
4 1/2 x 7/8"	10	13,300	F-167922	F-167953	F-246672	
5 x 7/8"	10	12,200	F-167939	F-167960	F-246702	F-167908
7 x 7/8"	10	8,600	F-167946	F-167977	F-246740	
Flat "FDF" Type 27						
4 1/2 x 7/8"	10	13,300	F-167618	F-167649	F-246573	F-167588
5 x 7/8"	10	12,200	F-167625	F-167656	F-246603	
7 x 7/8"	10	8,600	F-167632	F-167663	F-246641	

CUT-OFF WHEELS

Contaminate-free, no iron, sulphur or chlorine added.



FEIN FLASHCUT Superior Performance Cut-Off Wheels "SP INOX FLASH" for stainless steel, steel and non-ferrous materials

FEIN cut-off wheels are designed to meet the most demanding of applications. Unsurpassed cost-efficiency and outstanding productivity in addition to a smooth cutting action.

SP CUT-OFF WHEELS

EDP #	Size	RPM	Box
Type 27 Depressed-centre			
F-459669	4½ x .045 x 7/8"	13,300	25
F-162613	4½ x 3/32 x 7/8"	13,300	25
F-459645	5 x .045 x 7/8"	12,200	25
F-162651	5 x 3/32 x 7/8"	12,200	25
F-522882	5 x 1/8 x 7/8"	12,200	25
F-475836	6 x .045 x 7/8"	10,200	25
F-508459	6 x 3/32 x 7/8"	10,200	25
F-459652	7 x .045 x 7/8"	8,600	25
F-162279	7 x 3/32 x 7/8"	8,600	25

EDP #	Size	RPM	Box
Type 1 Flat			
F-499702	4½ x .040 x 7/8"	13,300	25
F-355442	4½ x .045 x 7/8"	13,300	25
F-499733	5 x .040 x 7/8"	12,200	25
F-355459	5 x .045 x 7/8"	12,200	25
F-581179	6 x .045 x 7/8"	10,200	25
F-581186	7 x .045 x 7/8"	8,600	25

FEIN FLASHCUT General Purpose Cut-Off Wheels "GP INOX" for stainless steel, steel and non-ferrous materials

FEIN general purpose wheels are a cost-effective alternative for all around general purpose use.

GP CUT-OFF WHEELS

EDP #	Size	RPM	Box
Type 27 Depressed-centre			
F-538999	5 x .045 x 7/8"	12,200	25
Type 1 Flat			
F-538142	5 x .045 x 7/8"	12,200	25



Contaminate-free, no iron, sulphur or chlorine added.



FEIN Small Diameter Cut-Off Wheels for stainless steel, steel, other ferrous and non-ferrous materials

SKA premium performance aluminium oxide wheels with special bond, high strength fiberglass reinforcement and premium grains for longer life and better performance. High performance A grade for everyday use.

"SKA" PREMIUM PERFORMANCE

Item #	Dia. x width x bore	Grit	RPM	Box
MFC 6126	1½ x 1/8 x 1/8"	60	45,000	100
MFC 6127	2 x .040 x 3/8"	60	30,000	100
MFC 1360	2½ x 1/16 x 3/8"	60	27,000	50
MFC 6130	3 x .040 x 3/8"	60	25,000	50
MFC 6131	3 x 1/16 x 3/8"	60	25,000	50
MFC 6133	4 x .040 x 3/8"	60	19,000	50

"A" HIGH PERFORMANCE

Item #	Dia. x width x bore	Grit	RPM	Box
MFC 1090	2 x 1/16 x 1/4"	60	30,000	100
MFC 1154	3 x .035 x 1/4"	60	25,000	50
MFC 1158	3 x .035 x 3/8"	60	25,000	50
MFC 1164	3 x 1/16 x 3/8"	36	25,000	50
MFC 1172	3 x 1/8 x 3/8"	36	25,000	50

For Mounting Mandrels, see page 2

PIPELINER WHEELS

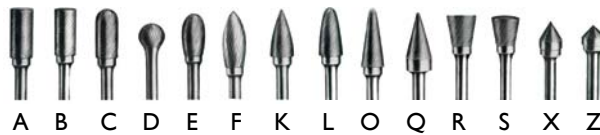
FEIN FLASHPIPE Superior Performance Pipeliner Wheels “SP PIPE” for stainless steel and steel

Type 27 combo wheels for light grinding or cutting of pipeliner root pass, weld and flame cut grinding and all facets of steel, stainless and non-ferrous metal production.

EDP #	Size	RPM	Box
F-457627	4½ x 1/8 x 7/8”	13,300	10
F-532973	5 x 1/8 x 7/8”	12,200	10
F-529232	6 x 1/8 x 7/8”	10,200	10
F-475287	7 x 1/8 x 7/8”	8,600	10
F-063413	9 x 1/8 x 7/8”	6,600	10



CARBIDE BURRS



FEIN Carbide Burrs 1/4” Shank

FEIN carbide burrs are made from the highest quality HSS material and precision ground for a perfectly balanced smooth performance.

Shape	Item #	D x L”
A) CYLINDRICAL Plain end	SA-14	3/16 x 5/8
	SA-1	1/4 x 5/8
	SA-3	3/8 x 3/4
	SA-5	1/2 x 1
	SA-6	5/8 x 1
	SA-16	3/4 x 3/4
	SA-7	3/4 x 1
	SA-9	1 x 1
	B) CYLINDRICAL End cut	SB-14
SB-1		1/4 x 5/8
SB-3		3/8 x 3/4
SB-5		1/2 x 1
SB-6		5/8 x 1
SB-16		3/4 x 3/4
SB-7		3/4 x 1
SB-9		1 x 1
C) CYLINDRICAL Round top		SC-14
	SC-1	1/4 x 5/8
	SC-3	3/8 x 3/4
	SC-5	1/2 x 1
	SC-6	5/8 x 1
	SC-7	3/4 x 1
	D) BALL	SD-11
SD-14		3/16 x 1/8
SD-1		1/4 x 3/16
SD-2		5/16 x 1/4

Shape	Item #	D x L”	
D) BALL	SD-3	3/8 x 5/16	
	SD-5	1/2 x 7/16	
	SD-6	5/8 x 9/16	
	SD-7	3/4 x 11/16	
	E) OVAL	SE-1	1/4 x 3/8
		SE-3	3/8 x 5/8
		SE-5	1/2 x 7/8
F) FLAME	SH-2	5/16 x 3/4	
	SH-5	1/2 x 1¼	
	K) TREE Pointed	SG-1	1/4 x 5/8
SG-3		3/8 x 3/4	
SG-13		1/2 x 3/4	
SG-5		1/2 x 1	
SG-6		5/8 x 1	
SG-15		3/4 x 1½	
L) TREE Radius	SF-1	1/4 x 5/8	
	SF-3	3/8 x 3/4	
	SF-5	1/2 x 1	
	SF-6	5/8 x 1	
	SF-14	3/4 x 1¼	
O) 14° TAPER Radius end	SL-1	1/4 x 5/8	
	SL-2	5/16 x 7/8	
	SL-3	3/8 x 1-1/16	
	SL-4	1/2 x 1-1/8	

Shape	Item #	D x L”
Q) CONE Pointed	SM-1	1/4 x 1/2
	SM-2	1/4 x 3/4
	SM-3	1/4 x 1
	SM-4	3/8 x 3/4
	SM-5	1/2 x 1
	SM-6	5/8 x 1-1/8
R) INVERTED CONE Plain end	SN-1	1/4 x 1/4
	SN-2	3/8 x 3/8
	SN-4	1/2 x 1/2
	SN-6	5/8 x 3/4
S) INVERTED CONE	SN-7	3/4 x 5/8
	SN-1E	1/4 x 1/4
	X) 60° CONE	SJ-1
SJ-3		3/8 x 60°
SJ-5		1/2 x 60°
Z) 90° CONE	SK-1	1/4 x 90°
	SK-3	3/8 x 90°
	SK-5	1/2 x 90°
	SK-7	3/4 x 90°
	SK-9	1 x 90°

Item #	Description
CBS-8	CARBIDE BURR SET 1/4” shank - 8 pieces
Contents	SA-5, SC-3, SC-5, SD-5, SF-3, SF-5, SG-3, SL-4

The carbide burrs shown in this brochure are Alternate Diamond Cut (ADC), other cuts are available.

CHOP SAW WHEELS

FEIN FLASHCHOP Superior Performance Chop Saw Wheels "SP CHOP" for low-powered chop saws

Flat Type 1 chop saw wheels, safe and efficient for portable chop saws. Use in all types of manufacturing, fabrication, maintenance and construction sites.



EDP #	Size	RPM	Box
For Steel			
F-629123	12 x 3/32 x 1"	5,100	20
F-629154	14 x 3/32 x 1"	4,400	10
F-638675	16 x 1/8 x 1"	3,800	10
For Stainless Steel			
F-639634	14 x 3/32 x 1"	4,400	10

CARBIDE BURRS



FEIN Carbide Burrs 1/8" Shank

Shape	Item #	D x L"
CYLINDRICAL: Plain end	SA-42	3/32 x 1/2
	SA-43	1/8 x 1/2
	SA-51	1/4 x 1/2
CYLINDRICAL: End cut	SB-51	1/4 x 1/2
CYLINDRICAL: Radius end	SC-41	3/32 x 1/2
	SC-42 *	1/8 x 1/2
	SC-51	1/4 x 1/2
BALL	SD-41	3/32 x 1/8
	SD-42	1/8 x 3/32
	SD-51	1/4 x 3/16
OVAL	SE-41	1/8 x 7/32
	SE-51	1/4 x 3/8
FLAME	SH-41	1/8 x 1/4

Shape	Item #	D x L"
TREE: Radius	SF-41	1/8 x 1/4
	SF-42	1/8 x 1/2
	SF-51	1/4 x 1/2
TREE: Pointed	SG-41	1/8 x 1/4
	SG-43	1/8 x 3/8
	SG-51	1/4 x 1/2
RADIUS END	SL-42	1/8 x 1/2
CONE	SM-41	1/8 x 3/8
	SM-42	1/8 x 1/2
	SM-43	1/8 x 5/8
INVERTED CONE	SM-51	1/4 x 1/2
	SN-42	1/8 x 1/8
	SN-51	1/4 x 1/4

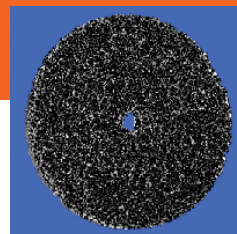


* indicates Standard Cut (STD)

POLI-CLEAN WHEELS

FEIN Poli-Clean Wheels universally suited to many materials

Item #	Description	Size	RPM	Opt. RPM
AMDC 100	Type 1	4 x 1/2 x 1/2"	6,000	
AMDC 100-1/4	Mounted	4 x 1/2 x 1/4" shank	6,000	
AMDC 150	Type 1	6 x 1/2 x 1/2" bore	4,000	
AMDC 180	Type 1	7 x 1/2 x 1/2" bore		
AMCP 115	Type 27	4 1/2 x 7/8"	10,500	6,500
AMCP 180	Type 27	7 x 7/8"	6,600	4,000



FEIN Poli-Clean wheels replace wire wheels and flap wheels, files, hand scrapers and other non-woven abrasives.

Item #	Description
AMM120NSP	Arbor for AMDC 100 / 150

FLAP WHEELS

FEIN High Performance Abrasive Flap Wheels for grinding, deburring, blending, and finishing

MOUNTED FLAP WHEELS 1/4" SHANK

SIZE	GRIT / ITEM #						RPM
	A40	A60	A80	A120	A180	A240	
3/4 x 3/4 x 1/4"	WF10142	WF10144	WF10145	WF10147	WF10149	WF10150	35,000
1 x 1/2 x 1/4"	WF10182	WF10184	WF10185	WF10187	WF10189	WF10190	30,000
1 x 1 x 1/4"	WF10242	WF10244	WF10245	WF10247	WF10249	WF10250	30,000
1 1/2 x 1/2 x 1/4"	WF10382	WF10384	WF10385	WF10387	WF10389	WF10390	30,000
1 1/2 x 3/4 x 1/4"	WF10402	WF10404	WF10405	WF10407	WF10409	WF10410	30,000
1 1/2 x 1 x 1/4"	WF10422	WF10424	WF10425	WF10427	WF10429	WF10430	30,000
1 3/16 x 1/2 x 1/4"	WF10342	WF10344	WF10345	WF10347	WF10349	WF10350	30,000
2 x 1/2 x 1/4"	WF10462	WF10464	WF10465	WF10467	WF10469	WF10470	25,000
2 x 3/4 x 1/4"	WF10502	WF10504	WF10505	WF10507	WF10509	WF10510	25,000
2 x 1 x 1/4"	WF10522	WF10524	WF10525	WF10527	WF10529	WF10530	25,000
2 1/2 x 1/2 x 1/4"	WF10622	WF10624	WF10625	WF10627	WF10629	WF10630	23,000
2 1/2 x 1 x 1/4"	WF10662	WF10664	WF10665	WF10667	WF10669	WF10670	23,000
3 x 1/2 x 1/4"	WF10722	WF10724	WF10725	WF10727	WF10729	WF10730	20,000
3 x 3/4 x 1/4"	WF10762	WF10764	WF10765	WF10767	WF10769	WF10770	20,000
3 x 1 x 1/4"	WF10782	WF10784	WF10785	WF10787	WF10789	WF10790	20,000
3 x 2 x 1/4"	WF10822	WF10824	WF10825	WF10827	WF10829	WF10830	12,000



Boxes of 10

Manufactured with aluminium oxide grain on an X-weight cotton backing for superior durability and greater flexibility. For die grinders, straight grinders and drills.

Item #	Description
WF99920	FLAP WHEEL KIT - 1/4" shank 40 assorted flap wheels in a display case
Contents	5 x WF10245 1 x 1 G80 5 x WF10465 2 x 1/2 G80 5 x WF10624 2 1/2 x 1/2 G60 5 x WF10247 1 x 1 G120 5 x WF10524 2 x 1 G60 5 x WF10784 3 x 1 G60 5 x WF10464 2 x 1/2 G60 5 x WF10525 2 x 1 G80

Small 1/8" shank high quality mini flap wheels, ideal for detailed finishing, for hard-to-reach applications, also good for tooling and die maintenance.

MOUNTED FLAP WHEELS 1/8" SHANK

SIZE	GRIT / ITEM #				GRIT / ITEM #				RPM
	A60	A80	A100	A120	A150	A180	A240	A320	
3/8 x 3/8 x 1/8"	WF12004	WF12005	WF12006	WF12007	WF12008	WF12009	WF12010	WF12011	40,000
5/8 x 5/8 x 1/8"	WF12024	WF12025	WF12026	WF12027	WF12028	WF12029	WF12030	WF12031	40,000
5/8 x 3/4 x 1/8"	WF12044	WF12045	WF12046	WF12047	WF12048	WF12049	WF12050	WF12051	40,000
3/4 x 3/8 x 1/8"	WF12084	WF12085	WF12086	WF12087	WF12088	WF12089	WF12090	WF12091	35,000
3/4 x 1/2 x 1/8"	WF12104	WF12105	WF12106	WF12107	WF12108	WF12109	WF12110	WF12111	35,000
3/4 x 5/8 x 1/8"	WF12124	WF12125	WF12126	WF12127	WF12128	WF12129	WF12130	WF12131	35,000
3/4 x 3/4 x 1/8"	WF12144	WF12145	WF12146	WF12147	WF12148	WF12149	WF12150	WF12151	35,000

NON-WOVEN FINISHING FLAP WHEELS

SIZE	GRIT / ITEM #				RPM
	A Coarse	A Medium	A Fine	A X-Fine	
1 x 1"	WF20090	WF20091	WF20092	WF20093	15,000
2 x 1"	WF20260	WF20261	WF20262	WF20263	13,700
2 x 2"	WF20290	WF20291	WF20292	WF20293	13,700
3 x 1"	WF20400	WF20401	WF20402	WF20403	8,600
3 x 2"	WF20430	WF20431	WF20432	WF20433	8,600



Boxes of 10

Non-aggressive nylon material provides a smooth surface finish. For die grinders, straight grinders and drills.

FLAP WHEELS

FEIN High Performance Interleaf Flap Wheels for deburring, blending, and finishing



INTERLEAF FINISHING FLAP WHEELS 1/4" SHANK

SIZE	GRIT / ITEM #					RPM
	A 80 Med.	A 120 Med.	A 150 Fine	A 180 X-Fine	A240 X-Fine	
1 x 1"	WF17185	WF17187	WF17188	WF17189	WF17190	15,000
2 x 1"	WF17525	WF17527	WF17528	WF17529	WF17530	13,700
2 x 2"	WF17585	WF17587	WF17588	WF17589	WF17590	13,700
3 x 1/2"	WF17745	WF17747	WF17748	WF17749	WF17750	8,600
3 x 1"	WF17805	WF17807	WF17808	WF17809	WF17810	8,600
3 x 2"	WF17865	WF17867	WF17868	WF17869	WF17870	8,600



Boxes of 10

Alternating flaps of abrasive cloth and non-woven finishing material provides some stock removal while leaving a brushed finish. One-step deburring and finishing. For die grinders, straight grinders and drills.

UNITIZED WHEELS

FEIN Unitized Finishing Discs on fibreglass backing for light blending, deburring and finishing

Abrasive grain impregnated throughout a medium density non-woven disc. Unitized material is conformable to the surface and works with light pressure allowing the operator to achieve a smooth, bright surface finish on stainless steel or aluminium. Available in three grades to meet most job applications.



Item #	Size	Type	Grit	Max. RPM	Opt. RPM	Box
WF45834	5 x 7/8"	Aluminium oxide	5A-Coarse	9,800	4,000	5
WF45837	5 x 7/8"	Silicone carbide	5S-Medium	9,800	4,000	5
WF45838	5 x 7/8"	Silicone carbide	5S-Fine	9,800	4,000	5

SURFACE CONDITIONING PRODUCTS

Assorted Surface Conditioning Products

Product	Type	Grits	Sizes "
RESIN FIBRE DISCS	Aluminium oxide	16, 24, 36, 50, 60, 80, 100, 120	4, 4½, 5, 7, 9
	Silicon carbide	16, 24, 36, 50, 60, 80, 100, 120	5, 7
	Blue zirconia	16, 24, 36, 50, 60, 80	4, 4½, 5, 7, 9
TRIM-CUT DISCS	Aluminium oxide	24, 36, 60, 120	3, 5
	Silicon carbide	36, 60, 120	3, 5
	Surface conditioner	Medium	3¼, 5
POLI-FLEECE DISCS	Velcro Type R	Extra-coarse, coarse, medium, fine, extra-fine	1½, 2, 3, 4, 4½, 5, 7
HAND PADS	Non-woven	Coarse, medium, fine, non-abrasive	6 x 9

Corresponding backing pads, mandrels & adaptors are available



High performance surface conditioning products to achieve a range of finishes on a variety of materials in many different surface conditioning applications.

**FEIN. Unverwüstliche
Elektrowerkzeuge.**



FEIN Demonstrations and Training



FEIN Mobile Training Centres

FEIN Canada's Mobile Training Centres showcase the FEIN product line and provide training on the fly for busy distributors and end users. FEIN "MTC" vehicles feature diesel powered self-sufficient electrical systems to allow for full demonstration of FEIN Tools and Abrasives. Well organized and well outfitted, the demonstration area is surprisingly roomy despite the large range of products and accessories carried on board. FEIN MTC vehicles travel across Canada highlighting FEIN products and technical expertise. Contact us for more information.

FEIN Grinders at a glance

- Durable HIGH-POWER-MOTOR
- TipStart or Classic versions
- QuickIN for tool-free changes
- Ergonomic design
- Powerful, reliable, safe
- Fatigue-free cutting and grinding
- Easy to handle
- Left or right-hand use
- Extremely low vibration



FEIN Polishers at a glance

- The most powerful polishers on the market
- Electronic speed control for constant speed and torque over the entire setting range
- Excellent results in steel, stainless steel, sheet metal and more.



Your specialist distributor will be happy to help.

FEIN Canadian Power Tool Company
323 Traders Blvd. East, Mississauga, ON L4Z 2E5
Tel: 905-890-1390 / 1-800-265-2581 • Email: fein@fein.ca

FEIN Québec Ltée
2810 De Miniac, St. Laurent, QC H4S 1K9
Tel: 514-331-7390 / 1-800-789-8181 • Email: feinquebec@fein.ca

www.fein.com